

विचलन DEVIATION :- CRSS'S SPECIFIC APPROVAL TO BE OBTAINED IN TERMS OF PARA 3.4(1)(b) OF G & SR OF N.F.R.L.Y. 2004 EDITION FOR RECKONING THE ADEQUATE DISTANCE

- a. AS 120M (MIN) FROM UP STARTER SIG. NO.-S37 TOWARDS DEAD END FOR RECEPTION OF UP TRAIN ON LINE NO.-1 WHEN PTS. NO. 111-112 NORMAL.
b. AS 120M (MIN) FROM UP STARTER SIG. NO.-S39 TOWARDS DEAD END FOR RECEPTION OF UP TRAIN ON LINE NO.-3 WHEN PTS. NO. 113-114 NORMAL.
c. AS 120M (MIN) FROM DN. STARTER SIG. NO.-S14 TOWARDS DEAD END FOR RECEPTION OF DN. TRAIN ON LINE NO.-1 WHEN PTS. NO. 103-104 NORMAL.
d. AS 120M (MIN) FROM DN. STARTER SIG. NO.-S16 TOWARDS DEAD END FOR RECEPTION OF DN. TRAIN ON LINE NO.-3 WHEN PTS. NO. 101-102 NORMAL.

Revision table with columns for No. and Date. Contains dates like 15/10/12 and 15/01/12 with corresponding initials and descriptions of revisions.

उपरोक्त सिग्नल एवं टोकनर अभियंता नि जो मु सिग एवं टोकनर अभियंता नि APPROVED DYCSTCE/COMPL CSTECON

APPROVED BY: 1. POSITION OF L-KING NO. RM-247 SHIFTED & MADE INTERLOCKED. 2. BR. NO. 231 SPAN(X118.3M) PSC ORDER CH.2846/6-7

APPROVED BY: 1. STARTER SIGNALS ARE SHIFTED TOWARDS BT/CT'S AREAS. 2. NOTE NOS. 1 & 2 ADDED.

APPROVED BY: 3 CSLO OF LINE NOS. 1, 2 & 3 CORRECTED.

APPROVED BY: AS PER RLY. 60ARPS' LET. NO.2012/516/ SEM-HI/MISC. DT.10.10.2012.

APPROVED BY: 2 STARTER SIGNALS ARE TO BE PROVIDED AT 120M (MIN) FROM END OF TRACK FROM EACH DIRECTION FOR MEETING THE CRANK AND LOCAL REQUIREMENTS WITH 5 SEC. TIME DELAY IN HR CIRCUIT WIDE RLY BOARD'S LET. NO.2012/516/SEM-HI/MISC. DT.10.10.2012.

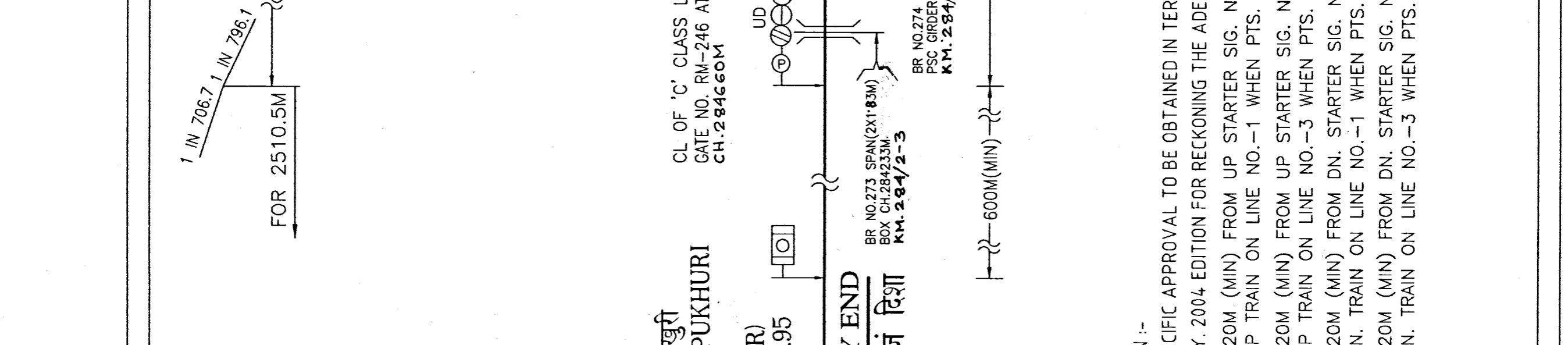
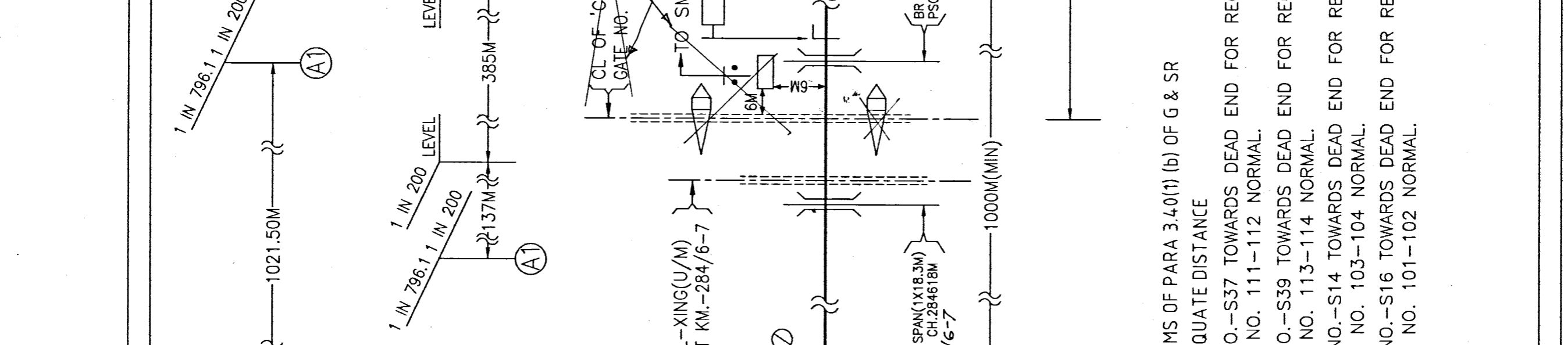
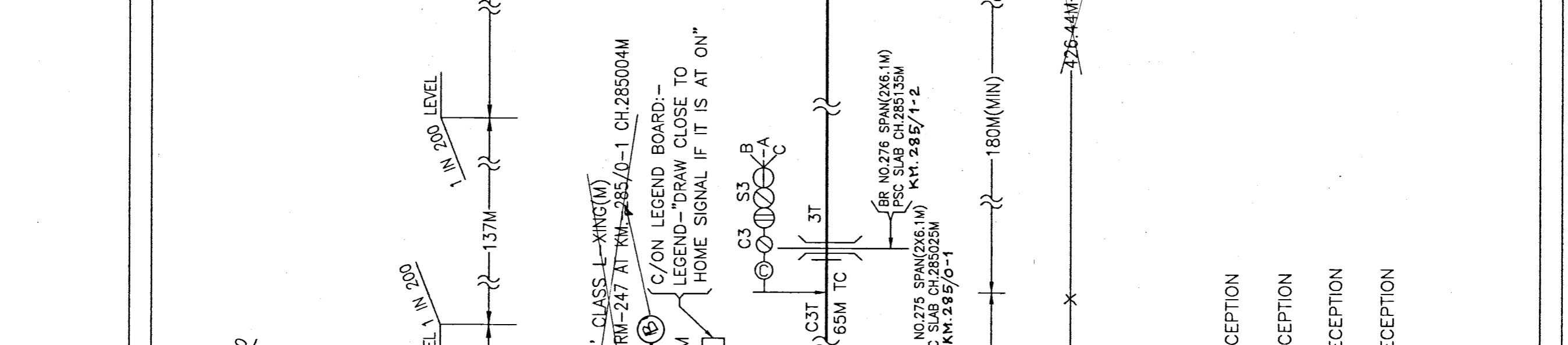
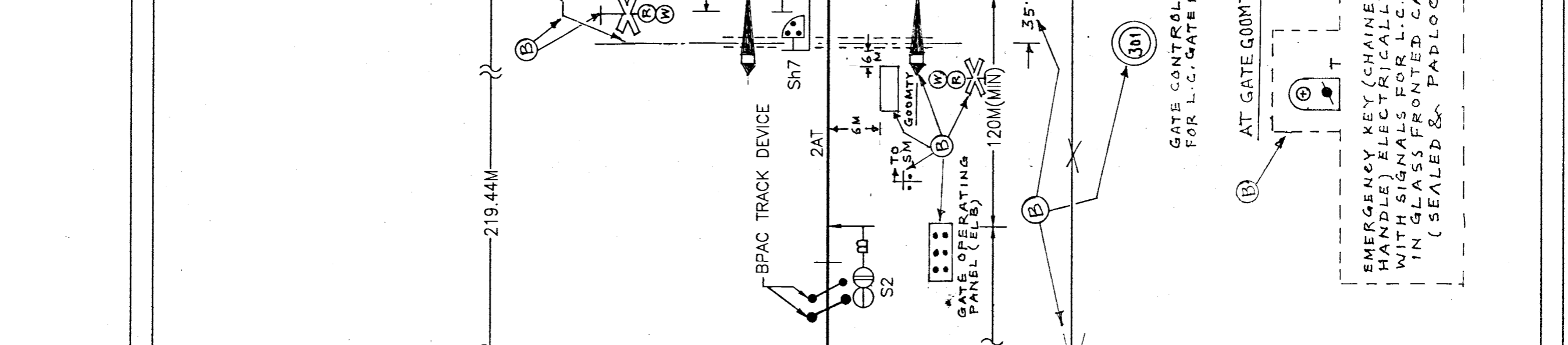
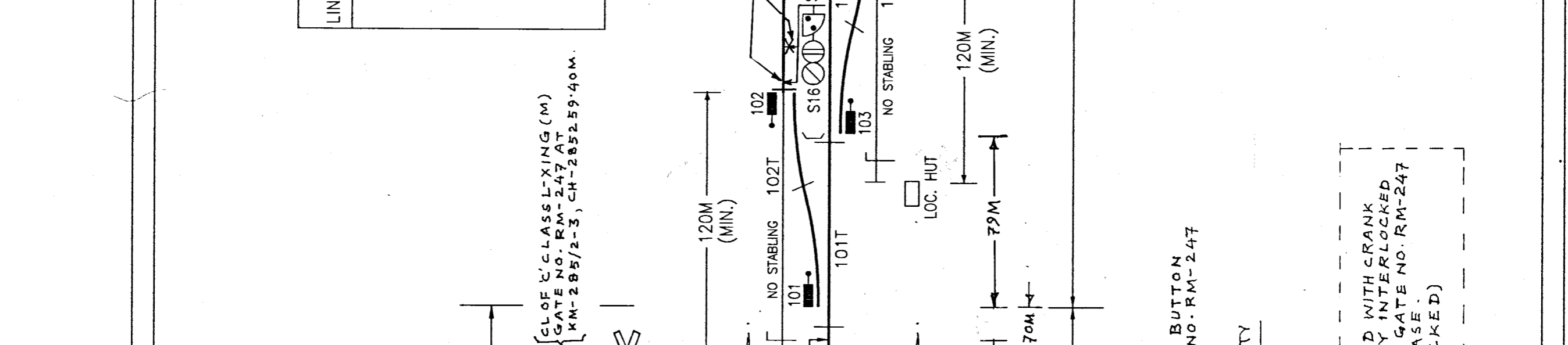
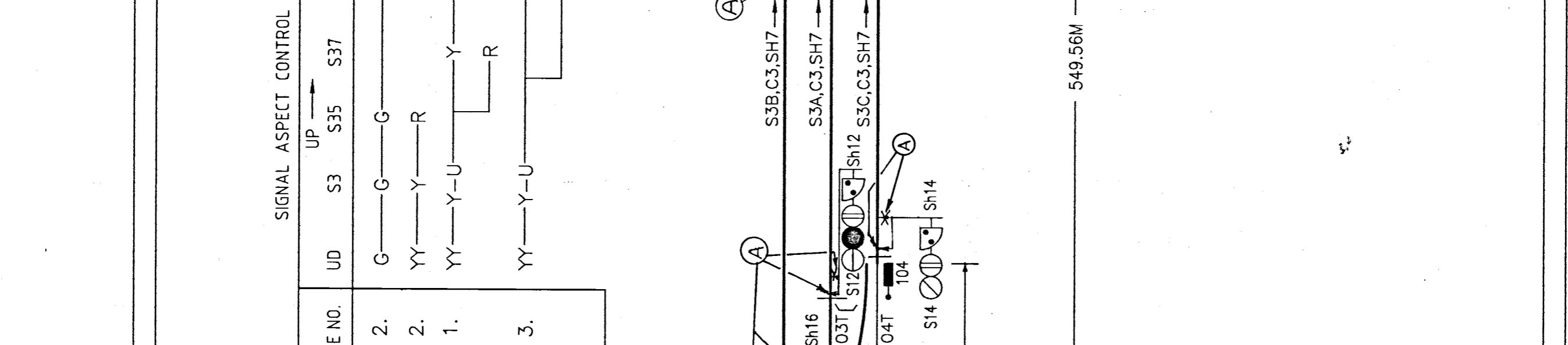
1. ALL PTS. & CROSSING ARE 1 IN 12 EXCEPT OTHERWISE MENTIONED.

Table with 2 columns: 'रिपयणी' (Remarks) and 'टिप्पणी' (Notes). Contains notes about gauge conversion, B.G. gauge, and interlocking standards.

Table with 3 columns: 'रिपयणी' (Remarks), 'टिप्पणी' (Notes), and 'स्कोप ऑफ वर्क' (Scope of Work). Contains specific technical notes.

CRS'S SPECIFIC APPROVAL TO BE OBTAINED IN TERMS OF PARA 3.4(1)(b) OF G & SR OF N.F.R.L.Y. 2004 EDITION FOR RECKONING THE ADEQUATE DISTANCE

- a. AS 120M (MIN) FROM UP STARTER SIG. NO.-S37 TOWARDS DEAD END FOR RECEPTION OF UP TRAIN ON LINE NO.-1 WHEN PTS. NO. 111-112 NORMAL.
b. AS 120M (MIN) FROM UP STARTER SIG. NO.-S39 TOWARDS DEAD END FOR RECEPTION OF UP TRAIN ON LINE NO.-3 WHEN PTS. NO. 113-114 NORMAL.
c. AS 120M (MIN) FROM DN. STARTER SIG. NO.-S14 TOWARDS DEAD END FOR RECEPTION OF DN. TRAIN ON LINE NO.-1 WHEN PTS. NO. 103-104 NORMAL.
d. AS 120M (MIN) FROM DN. STARTER SIG. NO.-S16 TOWARDS DEAD END FOR RECEPTION OF DN. TRAIN ON LINE NO.-3 WHEN PTS. NO. 101-102 NORMAL.



विचलन DEVIATION :- CRSS'S SPECIFIC APPROVAL TO BE OBTAINED IN TERMS OF PARA 3.4(1)(b) OF G & SR OF N.F.R.L.Y. 2004 EDITION FOR RECKONING THE ADEQUATE DISTANCE