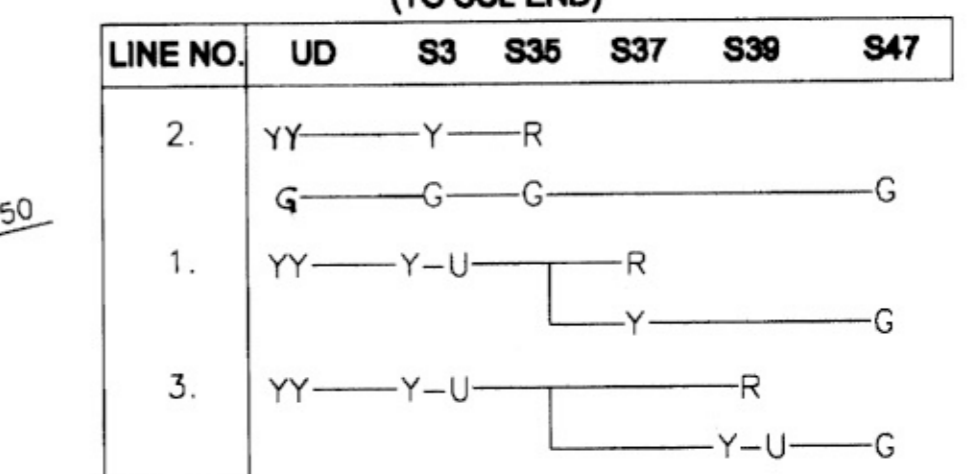
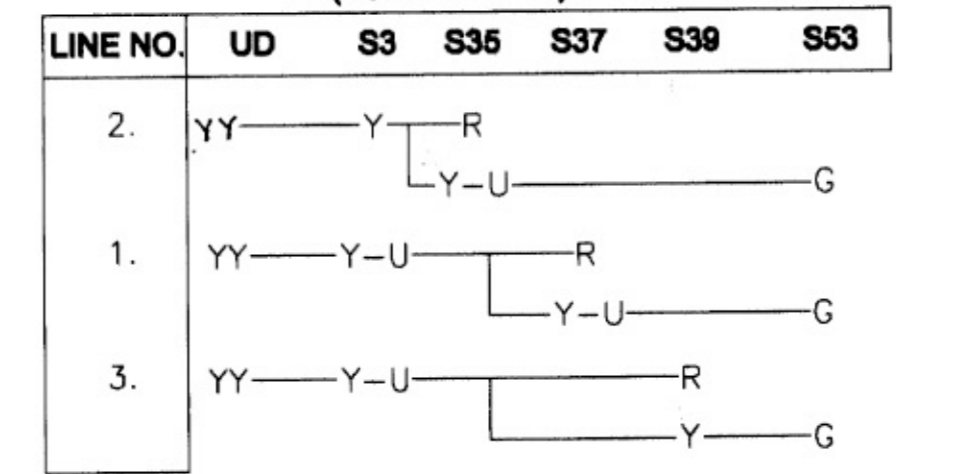


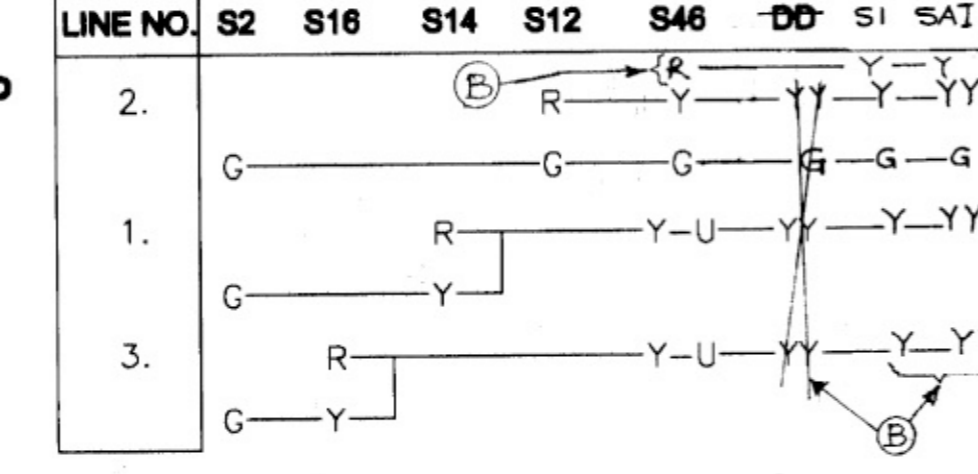
UP DIRECTION ASPECT SEQUENCE CHART FOR SIGNALS (TO SCL END)



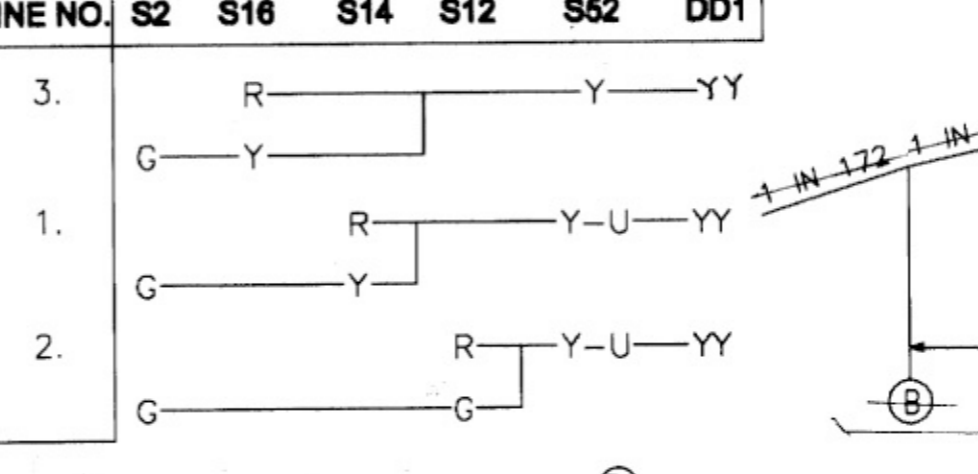
UP DIRECTION ASPECT SEQUENCE CHART FOR SIGNALS (TO BHRB END)



DN. DIRECTION ASPECT SEQUENCE CHART FOR SIGNALS (FROM SCL END)

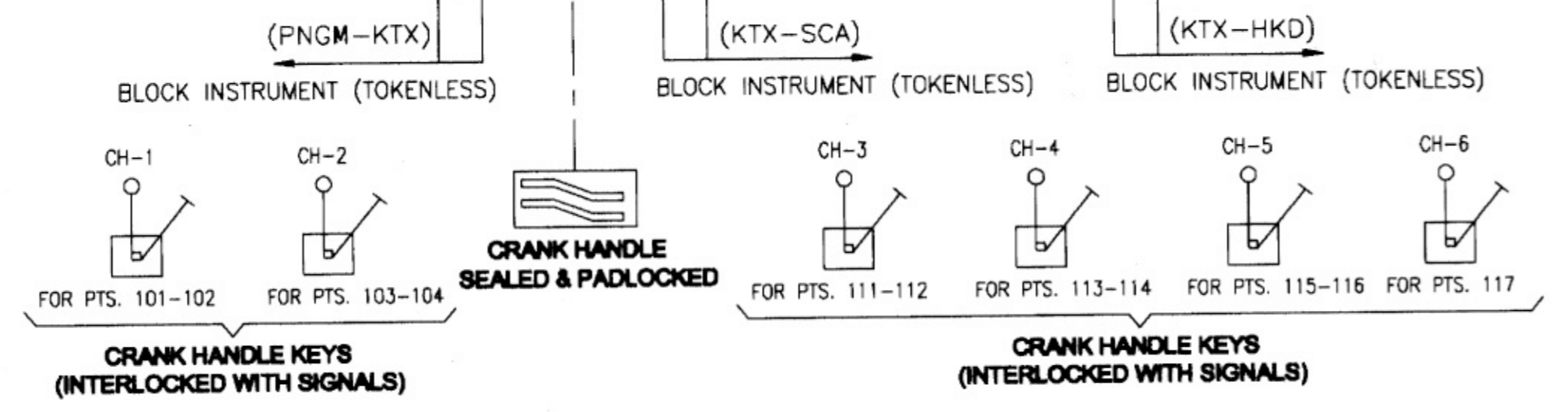


DN. DIRECTION ASPECT SEQUENCE CHART FOR SIGNALS (FROM BHRB END)



BUTTON PARTICULARS

BUTTON	FROM	TO	SPARES
SIGNALS	1	100	1,4,5,6, 8 TO 11,13,15, 17 TO 34, 36,38, 40 TO 43,45,46,48,51, 54 TO 100.
POINTS	101	200	105 TO 110 & 118 TO 200.
KEY PTS. & HI PTS.	201	250	201 TO 250
T/POINTS	251	300	251 TO 300
GATE & POINT CONTROL	301	351	301 TO 351
CH CONTROL	CH1	CH20	CH7 TO CH20



टिप्पणी NOTES

- ALL PTS. & CROSSING ARE 1 IN 12 EXCEPT OTHERWISE MENTIONED.
- STARTER SIGNALS ARE TO BE PLACED AT A DISTANCE NOT MORE THAN 3M. FROM B.T/G.J. AHEAD FOR MEETING TECHNICAL AND LOCAL REQUIREMENTS WITH 5SEC. TIME DELAY IN HR CIRCUIT VIDE R.Y. BOARD LET NO. 2012/SIG/SEM-11/MISC.DT. 10.10.2012.

<p>7. NEW 'SPL' CLASS (M) GATE NO. 3 BS SHOWN IN PLACE OF B.S. (M) AND SCL END CORRECTED.</p> <p>8. GRADIENT AT BHRB (B) AND SCL END CORRECTED.</p> <p>5. L.C. GATE NO. 3/BS (A) UP GRADED TO 'SPL' CLASS (M).</p> <p>4. CHANGE OF BRIDGES CORRECTED.</p> <p>3. MEDIUM LEVEL PLATFORM SHOWN. 2. ASR SEG. CHART CORRECTED. 1. KM. OF SPT' BLDG AND BLOCK STATION CORRECTED.</p>		<p>TO SUIT ES:R. NO. CE/Y/17/2002 ALT-2</p>	
<p>AS PER RLY. BOARD LET. NO. 2012/SIG/SEM-11/MISC. DT. 10.10.2012</p> <p>2. NOTE No. 2 ADDED</p> <p>1. STARTER SIGNALS ARE SHIFTED TOWARDS B.T/G.J'S AHEAD.</p>		<p>50.10.13</p>	
ALT	REF.	DESCRIPTION	DY.CSTECONPL
<p>DEVIATION -</p> <p>CRS'S SPECIFIC APPROVAL IS TO BE OBTAINED IN TERMS OF G.R. PARA 3.40 (1)(d) OF G & S.R. 2004 EDITION OF N.F. RLY. FOR RECKONING ADEQUATE DISTANCE.</p> <ol style="list-style-type: none"> AS 120M (MIN) FROM UP STARTER SIG. NO.-S37 UPTO DEAD END WHILE RECEIVING AN UP TRAIN ON LINE NO.-1 WHEN PTS. NO.111-112 NORMAL. AS 120M (MIN) FROM UP STARTER SIG. NO.-S39 UPTO DS PT. NO.-117 WHILE RECEIVING AN UP TRAIN ON LINE NO.-3 WHEN PTS. NO.113-114 & 117 NORMAL. AS 120M (MIN) FROM DN. STARTER SIG. NO.-S14 UPTO DEAD END WHILE RECEIVING A DN. TRAIN ON LINE NO.-1 WHEN PTS. NO.103-104 NORMAL. AS 120M (MIN) FROM DN. STARTER SIG. NO.-S16 UPTO DEAD END WHILE RECEIVING A DN. TRAIN ON LINE NO.-3 WHEN PTS. NO.101-102 NORMAL. <p>1. OPENING OF NEW STATION.</p>			
<p>उप मुद्रित एवं दुरसंचार अभियंता नि बो</p> <p>DY.CSTECONPL</p>		<p>मुद्रित एवं दुरसंचार अभियंता नि बो</p> <p>CSTECON</p>	<p>DATE OF OPENING</p> <p>CRS'S SANC. NO.</p>
<p>APPROVED</p> <p>काठखाल जं. KATAKHAL Jn. SIGNALLING PLAN (P.I)</p>			
<p>कार्य का क्षेत्र</p> <p>SCOPE OF WORK</p>	<p>LUMDING-SILCHAPRA GAUGE CONVERSION PROJECT</p>	<p>DRAWN</p> <p>CHECKED</p> <p>DATE</p>	<p>मंडल</p> <p>लुमडिंग</p> <p>DIVISION</p> <p>LUMDING</p>
<p>निचिल सं</p> <p>CASE NO.</p>	<p>B.G.</p>	<p>VERTICAL</p> <p>1:500</p>	<p>DRG. NO. नक्शा सं</p> <p>SG (SI) 4104</p>
<p>अन्तर्निहित का मानक</p> <p>STD. OF INTERLOCKING</p>	<p>II (R).</p>	<p>HORIZONTAL</p> <p>1:2000</p>	<p>DRG. NO. नक्शा सं</p> <p>SG (SI) 4104</p>
<p>स्टेशन का वर्ग</p> <p>CLASS OF STATION</p>	<p>'B'</p>	<p>SCALE</p>	<p>DRG. NO. नक्शा सं</p> <p>SG (SI) 4104</p>
<p>विचलन</p> <p>DEVIATION</p>	<p>AS LISTED</p>	<p>SCALE</p>	<p>DRG. NO. नक्शा सं</p> <p>SG (SI) 4104</p>
<p>इन्जी कोमन के अनुसार</p> <p>TO SUIT ENGG. PLAN NO.</p>	<p>CE/Y/17/2002 ALT-1</p>	<p>SCALE</p>	<p>DRG. NO. नक्शा सं</p> <p>SG (SI) 4104</p>
<p>विनाम सेना का स्थान लेना</p> <p>SUPERSEDES SIG. PLAN NO.</p>	<p>NIL</p>	<p>SCALE</p>	<p>DRG. NO. नक्शा सं</p> <p>SG (SI) 4104</p>
<p>पुर्वोत्तर सीमा रेलवे संकेत एवं दुरसंचार विभाग</p> <p>NORTHEAST FRONTIER RAILWAY - SIGNAL AND TELECOMMUNICATION DEPARTMENT.</p>			